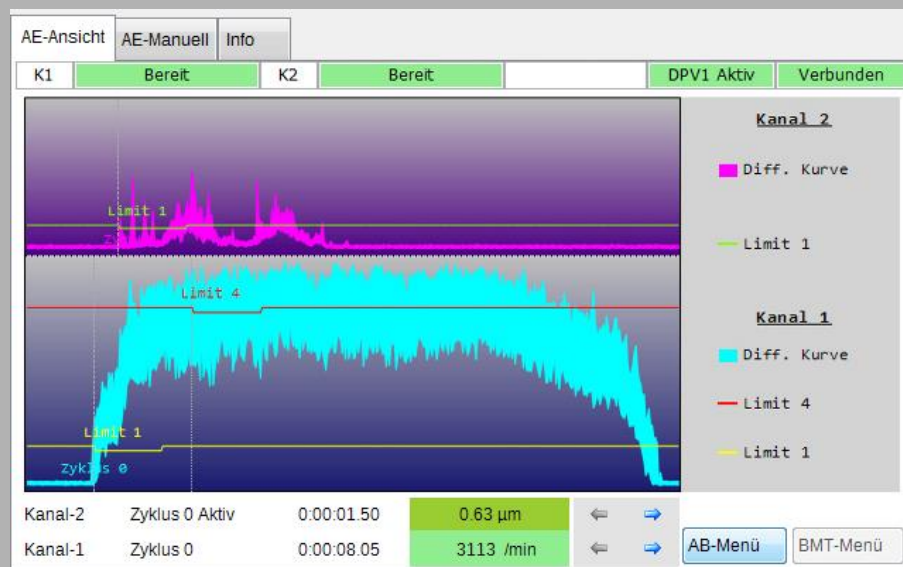
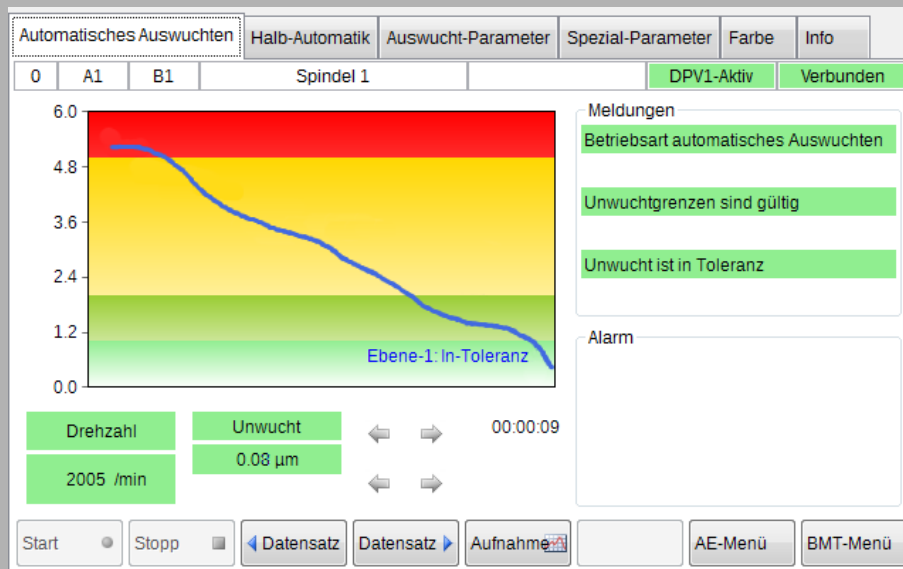


Elektronik- und Software-Komponenten für automatische Auswuchtsysteme mit AE-Körperschall-Funktionen



angenehm einfache Bedienung
übersichtlich - präzise - preiswert

Module fur jeden Anspruch



...mit PROFIBUS fur komfortable, frei konfigurierbare Maschinenkommunikation



...mit digitaler Ein-/Ausgabe fur alle Systeme

Manuelles Auswuchten plus Unwuchtuberwachung bei Hochlauf und Betrieb



Komplette Integration in die spezifische Software-
Umgebung und Bedienstruktur
des Maschinenherstellers

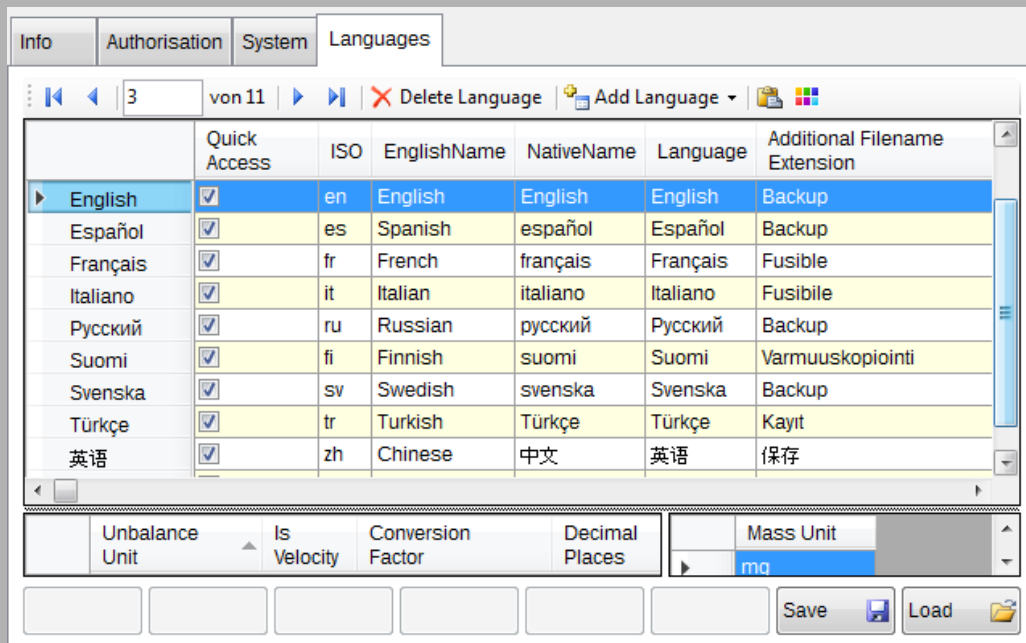
Internationale Sprachmenus fur bedienerfreundliche Nutzung



The screenshot shows a software interface with several tabs: AE视图, AE手动, 循环参数, 输出参数, 图片设置, and 信息. The 循环参数 (Cycle Parameters) tab is active, displaying various settings:

- 周期时间: 20.000 s
- 放大器: 60.00 dB
- 静态偏差: 0.00 V
- 动态偏差: 0.00 V
- 平滑处理: 1.0 ms
- 图片区: 50 %
- 游标显示:
- 单显示:
- 自动X轴:
- 连续显示:
- 浏览模式: 最大

On the right, there are four restriction columns (限制1-4) with checkboxes and numerical values. Below these are buttons for 复制, 粘贴, 保存, and 加载.



The screenshot shows the 'Languages' menu in the software. It lists various languages with their ISO codes, English names, native names, and additional filename extensions. The 'Mass Unit' is set to 'mg'.

	Quick Access	ISO	EnglishName	NativeName	Language	Additional Filename Extension
English	<input checked="" type="checkbox"/>	en	English	English	English	Backup
Espaol	<input checked="" type="checkbox"/>	es	Spanish	espaol	Espaol	Backup
Franais	<input checked="" type="checkbox"/>	fr	French	franais	Franais	Fusible
Italiano	<input checked="" type="checkbox"/>	it	Italian	italiano	Italiano	Fusibile
Русский	<input checked="" type="checkbox"/>	ru	Russian	русский	Русский	Backup
Suomi	<input checked="" type="checkbox"/>	fi	Finnish	suomi	Suomi	Varmuuskopiointi
Svenska	<input checked="" type="checkbox"/>	sv	Swedish	svenska	Svenska	Backup
Trke	<input checked="" type="checkbox"/>	tr	Turkish	Trke	Trke	Kayıt
英语	<input checked="" type="checkbox"/>	zh	Chinese	中文	英语	保存

Additional settings at the bottom include Unbalance Unit, Is Velocity, Conversion Factor, Decimal Places, and Mass Unit (mg). Buttons for Save and Load are also present.

Modernste, professionelle Technik aus einer Hand, zuverlassig und termingerecht.